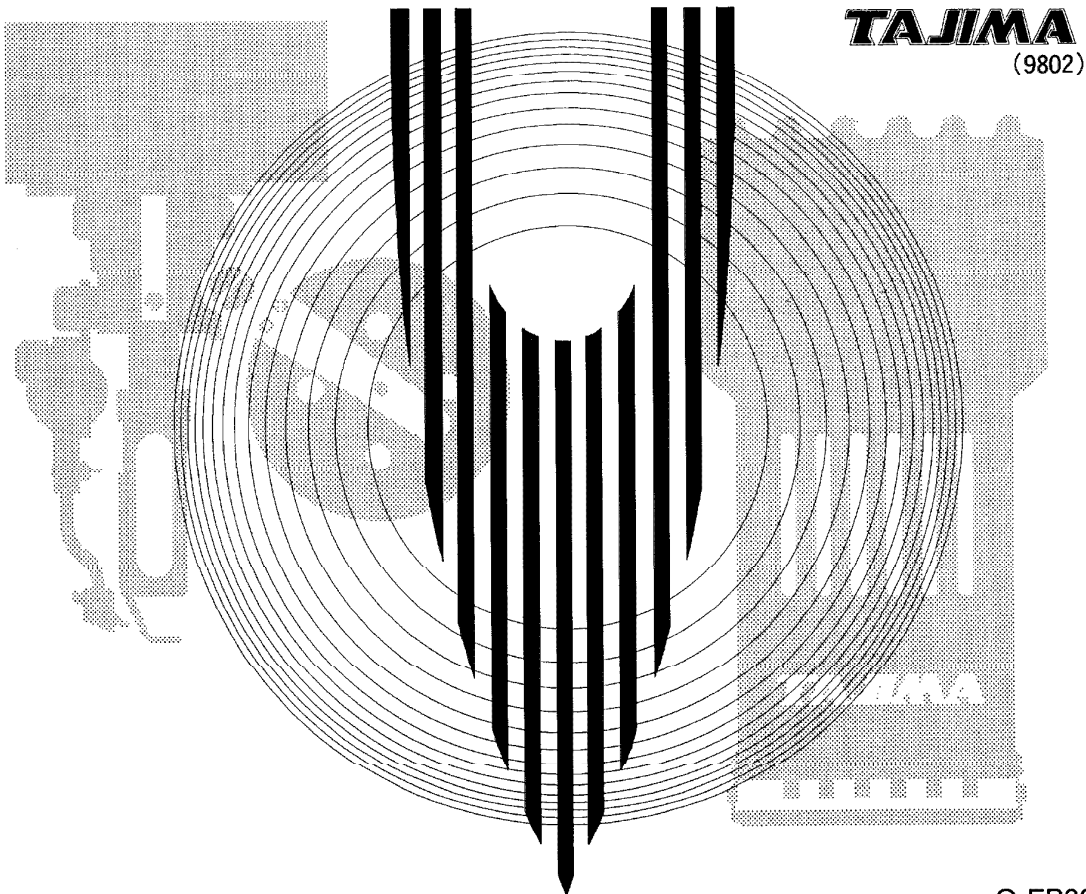


TTD-98-1016  
2-16-98

**INSTRUCTION MANUAL  
&  
PARTS LIST  
BORING DEVICE**



O-EB32-E

## **FOREWORD**

This instruction manual and parts list describes the installation procedure of a boring device. Please read through this manual and understand the contents before adjusting the unit. The contents of this manual are largely divided into the following sections.

[IMPORTANT SAFETY INSTRUCTIONS]

[SETTING]

[PARTS LIST]

Always keep this manual at hand whenever you need.

This manual may contain discrepancies in detailed information when compared with actual unit due to continued research and improvements. Please consult this Manual/Parts List even in such cases because the contents of the adjustment are almost the same.

If any question about the unit or contents of this manual arises, please consult your local TAJIMA distributor.

# IMPORTANT SAFETY INSTRUCTIONS

---

Operation of this device requires correct setting and adjustment to ensure safety.

Please read the IMPORTANT SAFETY INSTRUCTIONS in this instruction manual and parts list carefully and do not attempt operation of the machine before you thoroughly understand the items written under IMPORTANT SAFETY INSTRUCTIONS.

## [Warning Symbols]

Items which require your special attention on the installation and adjustment of a boring device are specified following the warning symbols and signal word. These items must be strictly observed to ensure safety during installation and adjustment.

Warning symbols and signal word definition are given below.



**CAUTION** .... Indicates a potentially hazardous situation which, if not avoided, may result in minor or moderate injury **[NOTE]** or property damage.

**NOTE:** An injury that does not necessitate hospitalization or visit to a hospital over a long period.



..... Prohibited items



..... Items that must be followed carefully to ensure safe operation.

## [Other Symbols]

In addition to the safety related symbols indicated above, the following symbols are also used in this manual to simplify the explanation.



Under this symbol, the information that should be attended to when performing the action according to the instructions given above is indicated.

## TABLE OF CONTENTS

FOREWORD

 IMPORTANT SAFETY INSTRUCTIONS

HOW TO MOUNT THE BORING DEVICE ..... 1

PARTS LIST BORING DEVICE (EB-1) ..... End of Volume



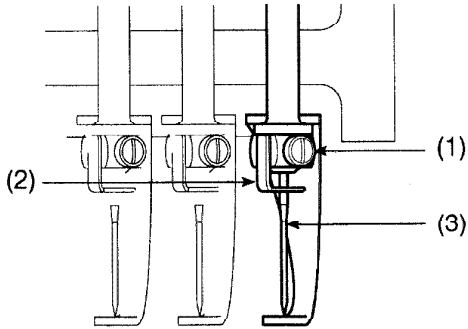
### CAUTION

- Before carrying out the work described in this instruction manual and parts list, make sure to turn OFF the power supply switch. Otherwise, the machine could move unexpectedly causing injury.
- Do not install an under thread controller UTC (option) for the machine equipped with a boring device. If boring is performed by the machine equipped with the UTC, it contacts the boring knife to be damaged.



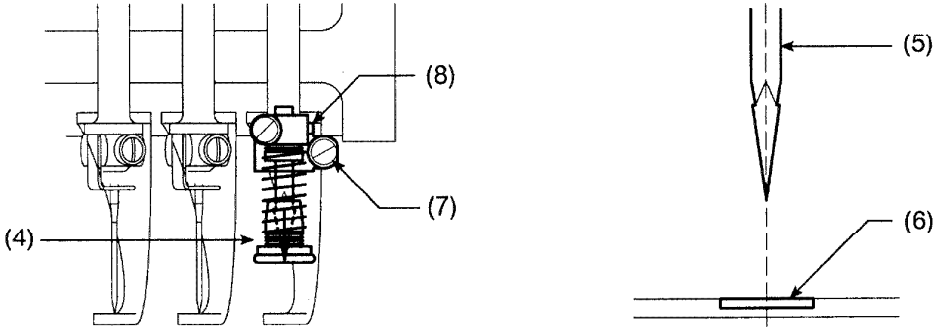
# HOW TO MOUNT THE BORING DEVICE

- 1) Replace the needle plates with those for boring use.
- 2) Loosen needle set screw (1) and remove needle clamp (2) and needle (3).

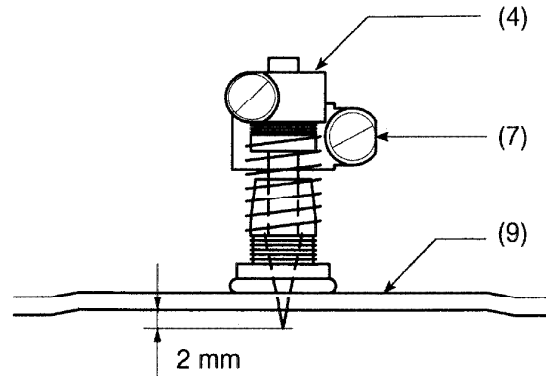


- 3) Mount boring knife set (4) to the needle bar and after aligning the center of boring knife (5) with the center of needle plate knife holder (6), lightly tighten fixing screw (7).

**NOTE:** Cushion ring A (8) should be left in place.



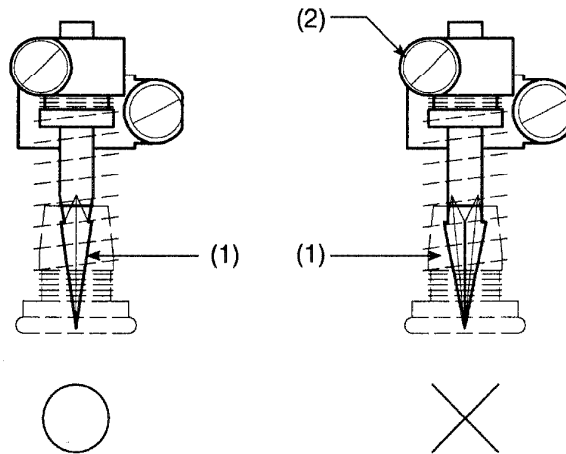
- 4) Turn the main shaft by hand until the needle bar reaches the lower dead point, adjust the position of boring knife set (4) so that the top of the boring knife projects 2 mm below the lower face of needle plate (9), then fully tighten fixing screw (7).



**Remark** Orientation of the boring knife

Mount the boring knife so that its one of the grooves faces toward you.

If a groove is not facing you, loosen fixing screw (2) and adjust the orientation of boring knife (1).

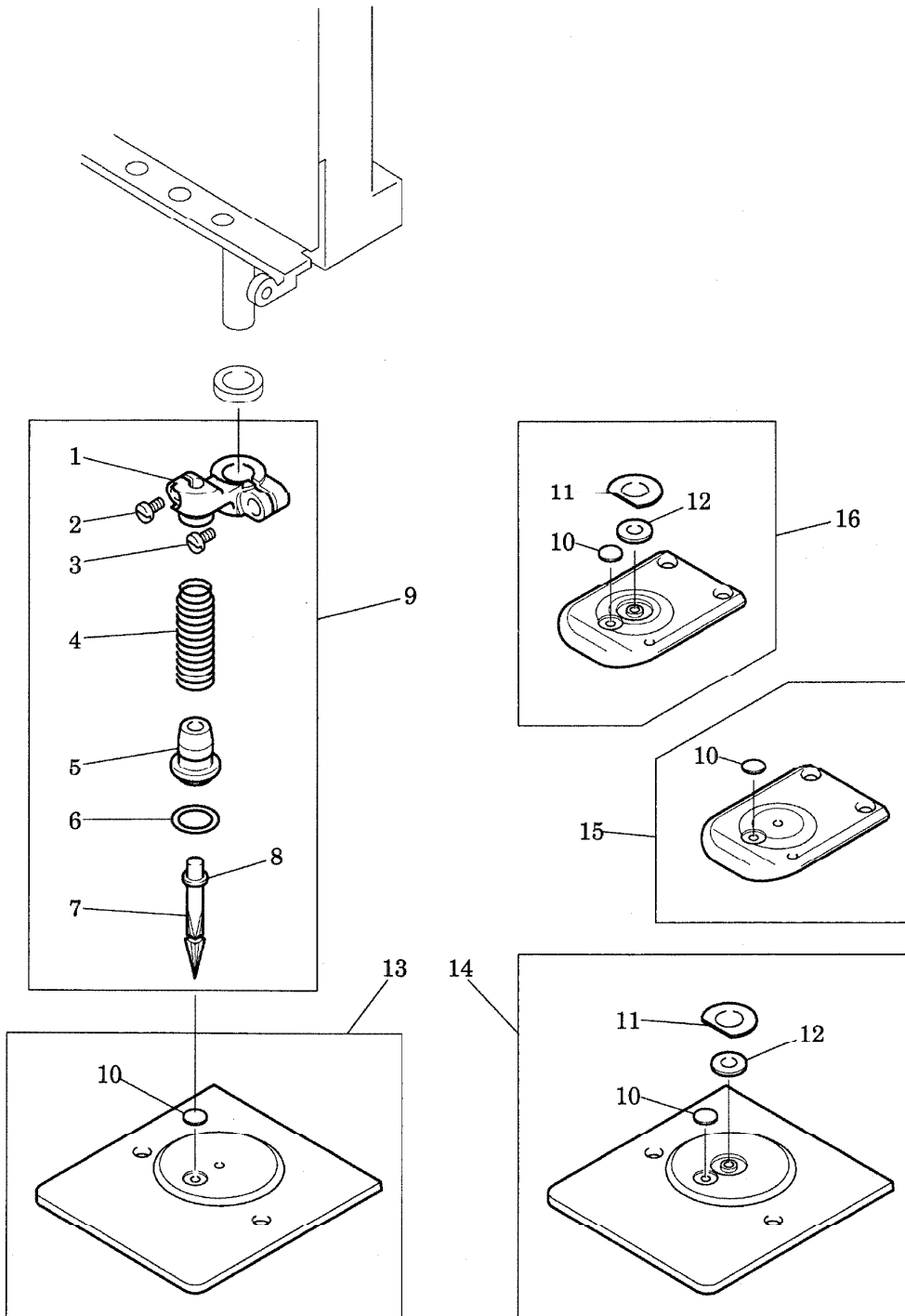


**NOTE:** DIP switch and (depending on the machine type) parameter settings of your machine must be changed in order to perform boring embroidery.

For details on the appropriate settings, refer to the instruction manual for your embroidery machine.

(BH02)

PARTS LIST BORING DEVICE



**TAJIMA**

**PARTS LIST UTC-KS-1 (UNDER THREAD CONTROLLER)**

**EB-1**

No.	Name	Part No.	Remark
1	Boring Knife Base	EB0601010000	
2	Flat Fillister Head Screw	SM15015460CN	1/8*44*6
3	Flat Fillister Head Screw	SM15020580CN	9/64*40*8
4	Knife Cover Spring	EB0604000000	
5	Boring Knife Cover	EB0603000000	
6	O-Ring	P70000000000	P-7
7	Boring Knife	EB0602000000	
8	Knife Liner	EB0602A00000	
9	Boring Knife Set	EB0601S10000	
10	Needle Plate Knife Holder	EFB202200000	
11	Needle Plate Hole Seal	EFB202300000	
12	Needle Plate Hole Collar	EF0202200000	
13	Needle Plate	FX0202B00000	2 mm dia. hole. Used for TMEG-X, TMFD (NR).
13	Needle Plate	FX0202D00000	3 mm dia. hole. Used for TMEG-X, TMFD (NR).
14	Needle Plate	EGB202S00020	2 mm dia. hole. Used for TMEG-V, TMFD (standard), TMLG.
14	Needle Plate	EGB202S00025	2.5 mm dia. hole. Used for TMEG-V, TMFD (standard), TMLG.
14	Needle Plate	EGB202S10030	3 mm dia. hole. Used for TMEG-V, TMFD (standard), TMLG.
15	Needle Plate	FC1204B20000	Used for TMEG-XC, TMFD-C (NR), TMFX II-C.
16	Needle Plate	FCB204030000	Used for TME-DC, TMFD-C (standard).
17			
18			
19			
20			
21			
22			
23			
24			
25			
26			
27			
28			
29			
30			
31			
32			
33			
34			
35			
36			
37			
38			
39			
40			
41			
42			
43			
44			
45			
46			
47			
48			
49			
50			

**NOTE:** As for parts with marks # or \* , please follow our instructions on Table of Contents, in your parts order.